



AMERICAN FLOOR PRODUCTS COMPANY, INC.

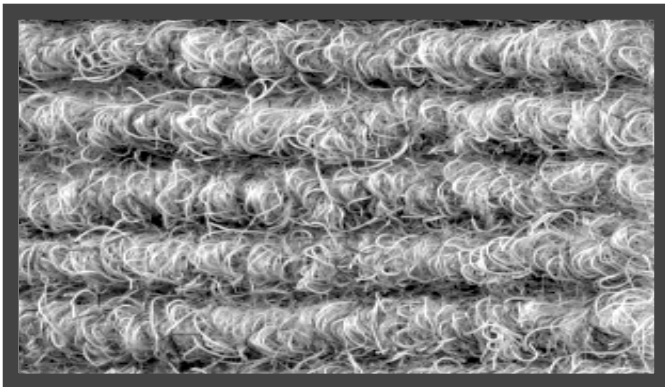
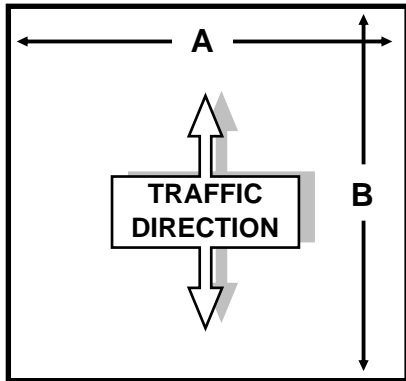
AFCO-USA

P.O. BOX 7055 • Gaithersburg, Maryland 20898 -7055 • 301-987-0490 • Fax 301-987-0422
 email: sales@afco-usa.com • Web Site: www.afco-usa.com

CUSTOMER P.O. #

LaSALLE[®] Lobby Carpet (CM-1735)

ALL SIZES SHOWN ARE INSIDE FRAME DIMENSIONS



OPTIONAL FRAMES: Separate Shop Drawings



Cross Section of Bevel Edge (Optional)

A x B
Type of Frame:
Style of Frame:
Type of Mat:
Color of Mat:

SPECIFICATIONS

CONSTRUCTION: Non woven (needlepunch)
 TEXTURE: Single Rib
 FACE FIBER: 100% solution dyed UV-stabilized polypropylene fiber
 FIBER BLEND: 17 to 160 denier per filament
 FACE WEIGHT: 33 ounces per square yard
 TOTAL WEIGHT: 51 ounces per square yard
 BACKING: Natural/synthetic composite rubber
 WIDTHS: 6 ft. 7 inches & 13 ft. 2 inches
 LENGTH: Any length up to 70 feet
 FIRE RATING: Passed Flammability DOC-FF-1-70 & FF-2-70

JOB NAME:	ITEMS	SELECTION QUANTITY
JOB NUMBER:		
CONTRACTOR:		
ARCHITECT:		
DEALER NAME:		
APPROVAL SIGNATURE: _____ Date: _____	DRAWN BY: _____	